



TABLE OF CONTENTS



Handles & Handle Ferrules

Page 2-14



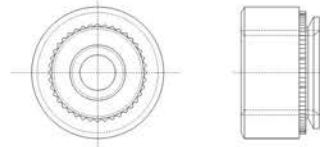
Precision Shoulder Screws

Page 110-120



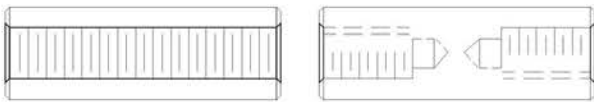
Spacers

Page 15-29



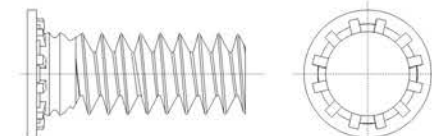
Self - Clinching Nuts

Page 121-122



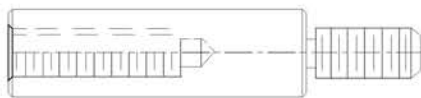
Female Standoffs

Page 30-42



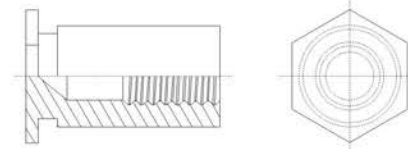
Self - Clinching Studs

Page 123



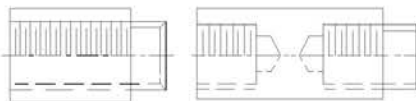
Male-Female Standoffs

Page 43-49



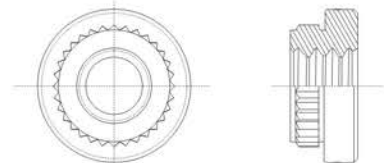
Self - Clinching Standoffs

Page 124-125



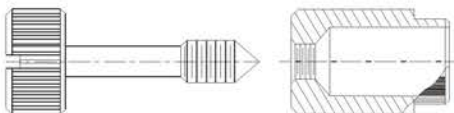
Swage Standoffs

Page 50-54



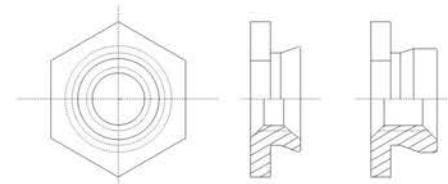
Self - Clinching Broaching Nuts

Page 126



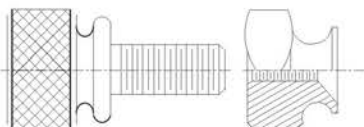
Captive Screws & Panel Screw Retainers

Page 55-97



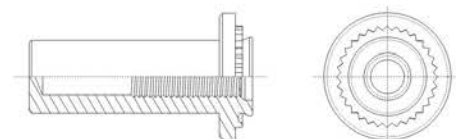
Self - Clinching Flush Nuts

Page 127



Thumb Screws & Thumb Nuts

Page 98-109



Self - Clinching Blind Fastener

Page 128

Foreword

(Handles)

Chart 1_Material Selection

Material	Code		
	Round	Oval	Extrusion
Aluminum 6063	A	A	A
Brass	B		
Carbon Steel	S		
Stainless Steel 300 Series	SS	SS	

Chart 2_Threads Selection

Thread Size	Depth
2-56	5/32~3/16
4-40	5/32~3/8
6-32	5/32~3/8
8-32	5/32~7/16
10-24	3/8~9/16
10-32	3/8~9/16
1/4-20	3/8~9/16
1/4-28	3/8~9/16
5/16-18	3/8~9/16
M2.5x0.45	3.9~4.76mm
M3x0.5	4~10mm
M3.5x0.6	4~10mm
M4x0.7	9.5~15mm
M5x0.8	9.5~15mm
M6x1.0	9.5~15mm
M8x1.25	9.5~15mm
M10x1.5	9.5~15mm

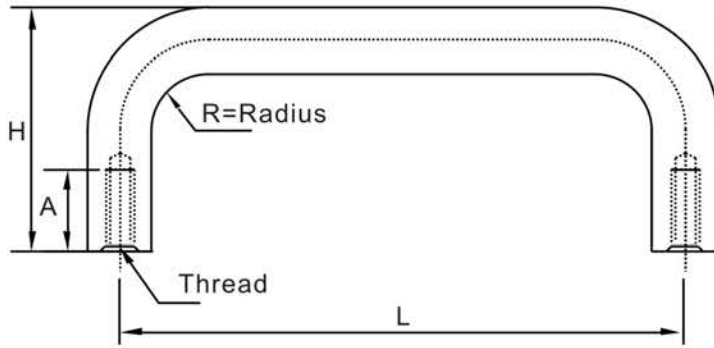
Chart 3_Finish Selection

Standard Finish	Finish Code	Aluminum	Brass	Carbon	Stainless
				Steel	Steel
Nickel Plate	1	*	*	*	
Chrome Plate	2	*	*	*	
Dull Chrome	3	*	*	*	
Dull Nickel	4	*	*	*	
Satin Nickel	5	*	*	*	
Satin Chrome	6	*	*	*	
Black Nickel	7	*	*	*	
Brass	8	*	*	*	
Gold Plate	9		*	*	
Zinc Plate	10		*	*	
Zinc Yellow Chromate	11		*	*	
Black E-Coat	12	*	*	*	*
Color E-Coat	13	*	*	*	*
Plain	14	*	*	*	*
Brush Chrome	15		*	*	
Brush Nickel with paint	16		*	*	
Brush Dull Chrome with Clear Paint	17		*	*	
Brush Dull Nickel with Clear Paint	18		*	*	
Nickel Plate with Color Paint	19		*	*	
Clear Paint	20	*	*	*	*
Oil Rubbed Bronze	21	*	*	*	*
Black Oxide	22	*	*	*	*
Zinc Plate Black Chromate	23		*	*	
Powder Coating	P**	*	*	*	*
Painting	L**	*	*	*	*
Machine Rubbing	B1	*	*	*	*
Mirror Polish (Hand Made)	B2				*
Brush	B3	*	*	*	*
Brush with Clear Paint	B4	*	*	*	*
Passivate	B5				*
Anodize Clear	A1	*			
Glossy Anodize Clear	A2	*			
Anodize Black	A3	*			
Glossy Anodize Black	A4	*			
Anodize + Color	A5	*			
Sand Blasting + Anodize	A**	*			
Satin Finish	G1	*	*	*	*
Aluchrome	A29	*			
Clear Iridite	A30	*			

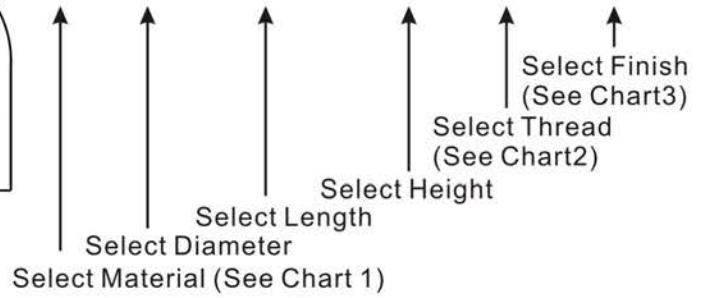
Custom modified products are available.

ROUND HANDLE

INTERNAL THREAD



AL-08-096D-H31-M4-A1



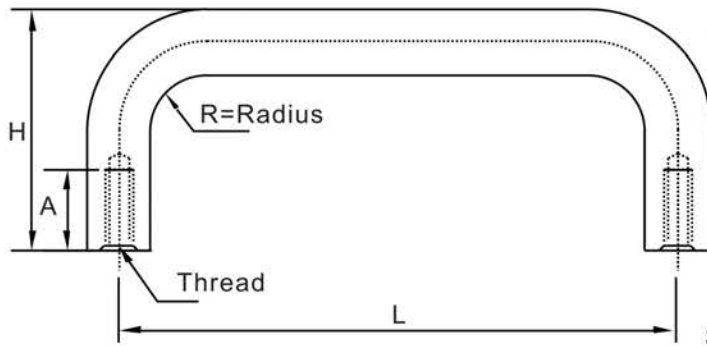
How to order Round Handles

Part No.	Dia. mm	L mm	H mm	Part No.	Dia. mm	L mm	H mm
03020D	3.175	20.62	12.7	63039D	6.35	39	25~38.1
03002D	3.175	50.8 (2")	19-32	63040D	6.35	40	25~38.1
04021D	4	21	19-38.1	63043D	6.35	43.2	25~38.1
04022D	4	22	19-38.1	63044D	6.35	44.45 (1.75")	25~38.1
04025D	4	25	19-38.1	63051D	6.35	51	25~38.1
04032D	4	32	19-38.1	63054D	6.35	54	25~38.1
04038D	4	38.1 (1.5")	19-32	63055D	6.35	55.5	25~38.1
04003D	4	76.2(3")	19-38.1	63060D	6.35	60	25~38.1
04090D	4	90	19-38.1	63063D	6.35	63.5(2.5")	25~38.1
04098D	4	98.5	19-38.1	63064D	6.35	64	25~38.1
04004D	4	101.6(4")	19-38.1	63070D	6.35	70	25~38.1
47025D	4.76	25	19-38.1	63071D	6.35	71.2	25~38.1
47001D	4.76	25.4 (1")	19-38.1	63003D	6.35	76.2(3")	25~38.1
47026D	4.76	26.7	19-38.1	63082D	6.35	82.9	25~38.1
47028D	4.76	28	19-38.1	63092D	6.35	92	25~38.1
47038D	4.76	38.1 (1.5")	19-38.1	63096D	6.35	96	25~38.1
47002D	4.76	50.8 (2")	19-38.1	63098D	6.35	98	25~38.1
47063D	4.76	63.5 (2.5")	19-38.1	63100D	6.35	100	25~38.1
47003D	4.76	76.2 (3")	19-38.1	63004D	6.35	101.6(4")	25~38.1
47082D	4.76	82.5	19-38.1	63102D	6.35	102	25~38.1
47006D	4.76	152.4(6")	19-38.1	63110D	6.35	110	25~38.1
05001D	5	25.4 (1")	19-38.1	63115D	6.35	115	25~38.1
05032D	5	32	19-38.1	63117D	6.35	117	25~38.1
05055D	5	55	19-38.1	63005D	6.35	127(5")	25~38.1
05003D	5	76.2 (3")	19-38.1	63128D	6.35	128	25~38.1
05095D	5	95.6	19-38.1	63006D	7	152.4(6")	25~38.1
05004D	5	101.6 (4")	19-38.1	63234D	7	234	25~38.1
06030D	6	30	19-38.1	07067D	8	67	25~38.1
06079D	6	79	19-38.1	07140D	8	140	25~38.1
63025D	6.35	25	25~38.1	08017D	8	17.4	25~38.1
63028D	6.35	28.6	25~38.1	08030D	8	30	25~38.1
63032D	6.35	32	25~38.1	08040D	8	40	25~38.1
63033D	6.35	33.5	25~38.1	08048D	8	48	25~38.1
63038D	6.35	38.1 (1.5")	25~38.1	08050D	8	50	25~38.1

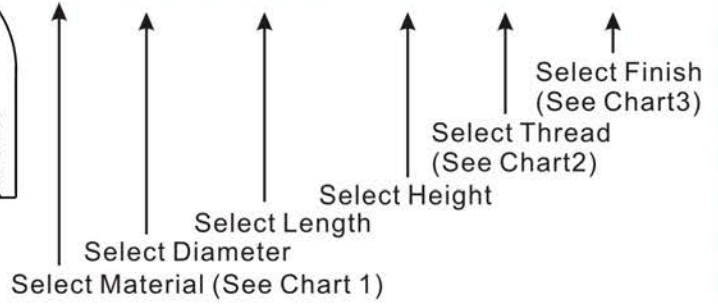
Custom modified products are available.

ROUND HANDLE

INTERNAL THREAD



AL-08-096D-H31-M4-A1



How to order Round Handles

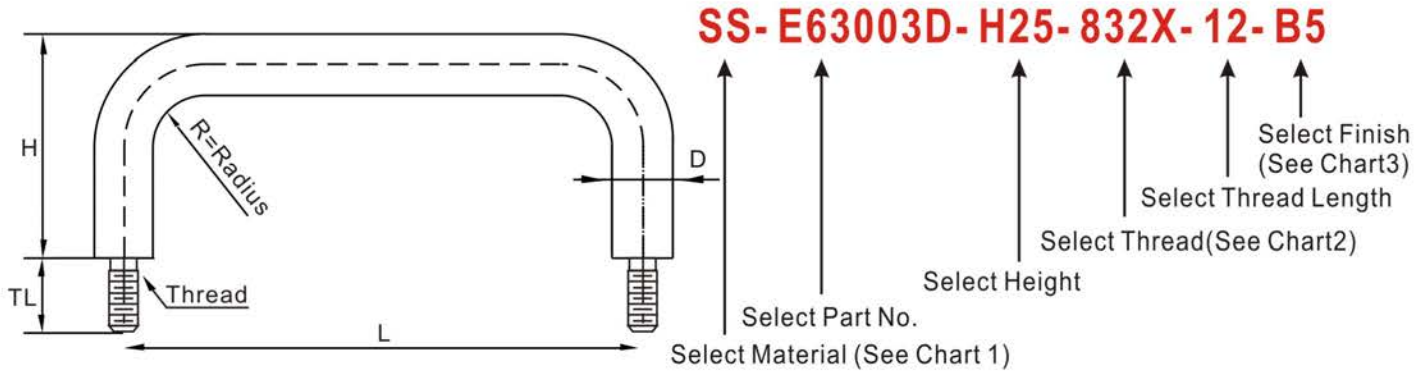
Part No.	Dia. mm	L mm	H mm
08055D	8	55	25~38.1
08057D	8	57	25~38.1
08063D	8	(63.5)2.5"	25~38.1
08064D	8	64	25~38.1
08070D	8	70	25~38.1
08003D	8	76(3")	25~38.1
08080D	8	80	25~38.1
080035D	8	88.9(3.5")	25~38.1
08090D	8	90	25~38.1
08092D	8	92	25~38.1
08004D	8	101.6(4")	25~38.1
08108D	8	108	25~38.1
08110D	8	110	25~38.1
080045D	8	114.3(4.5")	25~38.1
08120D	8	120	25~38.1
08005D	8	127(5")	25~38.1
08128D	8	128	25~38.1
08129D	8	129	25~38.1
08133D	8	133	25~38.1
08140D	8	140	25~38.1
08006D	8	152.4(6")	25~38.1
08160D	8	160	25~38.1
08007D	8	177.8(7")	25~38.1
08180D	8	180	25~38.1
08192D	8	192	25~38.1
08237D	8	237	25~38.1
08240D	8	240	25~38.1
86063D	8.6	63.5(2.5")	30~45
09150D	9	150	30~45
95064D	9.5	64	30~45
95003D	9.5	76.2(3")	30~45
950035D	9.5	88.9(3.5")	30~45
95096D	9.5	96	30~45

Part No.	Dia. mm	L mm	H mm
95100D	9.5	100	30~45
95004D	9.5	101.6(4")	30~45
95005D	9.5	127(5")	30~45
95128D	9.5	128	30~45
95006D	9.5	152.4(6")	30~45
95160D	9.5	160	30~45
95192D	9.5	192	30~45
95224D	9.5	224	30~45
95256D	9.5	256	30~45
95288D	9.5	288	30~45
95352D	9.5	352	30~45
10064D	10	64	30~45
10003D	10	76.2(3")	30~45
100035D	10	88.9(3.5")	30~45
10092D	10	92.5	30~45
10096D	10	96	30~45
10100D	10	100	30~45
10004D	10	101.6(4")	30~45
10120D	10	120	30~45
10005D	10	127(5")	30~45
10128D	10	128	30~45
10150D	10	150	30~45
10006D	10	152.4(6")	30~45
10160D	10	160	30~45
10192D	10	192	30~45
10224D	10	224	30~45
10256D	10	256	30~45
10288D	10	288	30~45
10352D	10	352	30~45
12004D	12.7	101.6(4")	35~76.2
20200D	20	200	35~76.2
25203D	25.4	203.2	35~76.2

Custom modified products are available.

ROUND EXTERNAL THREAD HANDLES

EXTERNAL THREAD



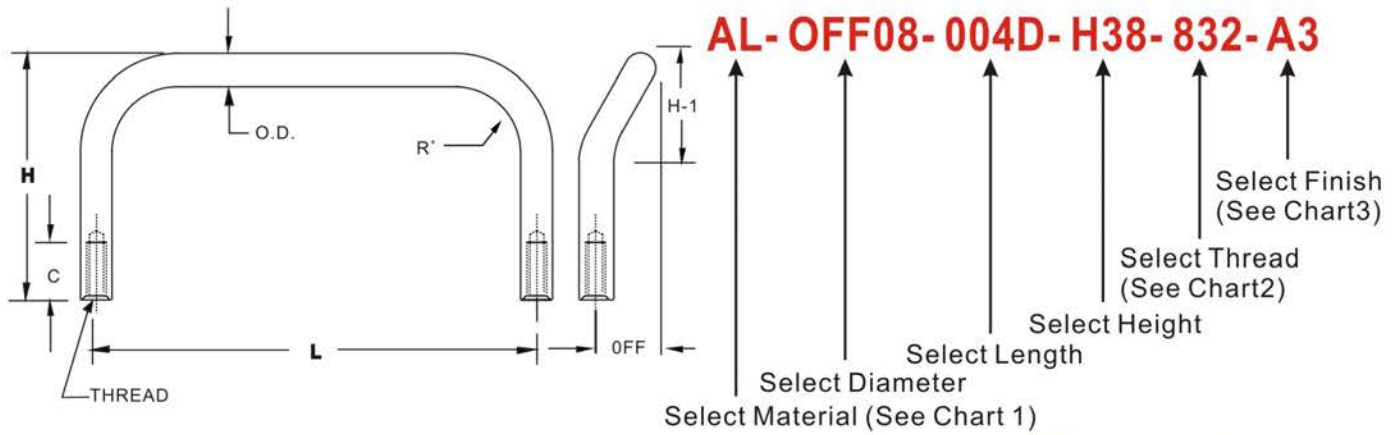
How to order External Thread Round Handles

Part No.	Dia. mm	L mm	H mm	TL mm
E47001D	4.76	25.4(1")	25~51	4~12.7
E470015D	4.76	38.1(1.5")	25~51	4~12.7
E47002D	4.76	50.8(2")	25~51	4~12.7
E470025D	4.76	63.5(2.5")	25~51	4~12.7
E47003D	4.76	76.2(3")	25~51	4~12.7
E47004D	4.76	101.6(4")	25~51	4~12.7
E47005D	4.76	127(5")	25~51	4~12.7
E47006D	4.76	152.4(6")	25~51	4~12.7
E63001D	6.35	25.4(1")	25~51	6~12.7
E63002D	6.35	50.8(2")	25~51	6~12.7
E630025D	6.35	63.5(2.5")	25~51	6~12.7
E63003D	6.35	76.2(3")	25~51	6~12.7
E630035D	6.35	88.9(3.5")	25~51	6~12.7
E63004D	6.35	101.6(4")	25~51	6~12.7
E63005D	6.35	127(5")	25~51	6~12.7
E63006D	6.35	152.4(6")	25~51	6~12.7
E080025D	8	63.5(2.5")	30~57	8~24
E08003D	8	76.2(3")	30~57	8~24
E080035D	8	88.9(3.5")	30~57	8~24
E08004D	8	101.6(4")	30~57	8~24
E08108D	8	108(4.25")	30~57	8~24
E080045D	8	114.3(4.5")	30~57	8~24
E08005D	8	127(5")	30~57	8~24
E08006D	8	152.4(6")	30~57	8~24
E95003D	9.5	76.2(3")	30~57	9.5~24
E950035D	9.5	88.9(3.5")	30~57	9.5~24
E95004D	9.5	101.6(4")	30~57	9.5~24
E95005D	9.5	127(5")	30~57	9.5~24
E95006D	9.5	152.4(6")	30~57	9.5~24

Custom modified products are available.

ROUND OFF-SET HANDLES

INTERNAL THREAD



How to order Round Off-Set Handles

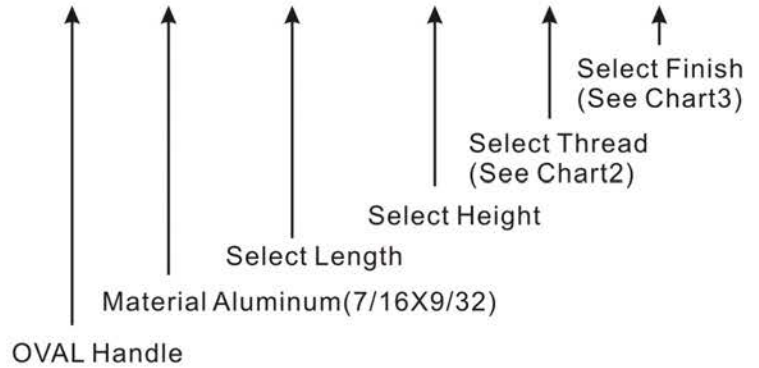
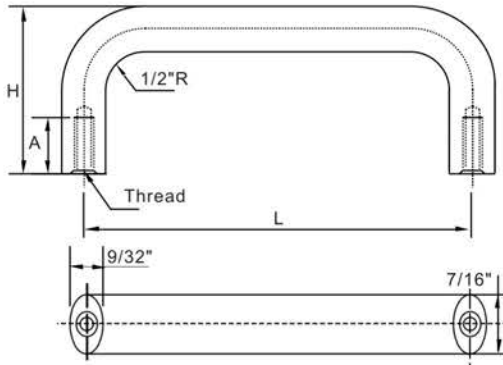
Part No.	Dia. mm	L mm	OFF mm	H mm	H-1 mm
OFF47001D	4.76	25.4(1")	8	25.4~38.1	14.3
OFF47002D	4.76	50.8(2")	8	25.4~38.1	14.3
OFF47003D	4.76	76.2(3")	8	25.4~38.1	14.3
OFF47004D	4.76	101.6(4")	8	25.4~38.1	14.3
OFF63003D	6.35	76.2(3")	9.5	25.4~50.8	17.5
OFF63004D	6.35	101.6(4")	9.5	25.4~50.8	17.5
OFF63005D	6.35	127(5")	9.5	25.4~50.8	17.5
OFF63006D	6.35	152.4(6")	9.5	25.4~50.8	17.5
OFF08003D	8	76.2(3")	12.7	33.3~50.8	22.2
OFF08004D	8	101.6(4")	12.7	33.3~50.8	22.2
OFF08005D	8	127(5")	12.7	33.3~50.8	22.2
OFF08006D	8	152.4(6")	12.7	33.3~50.8	22.2
OFF95003D	9.5	76.2(3")	15.9	33.3~50.8	27
OFF95004D	9.5	101.6(4")	15.9	33.3~50.8	27
OFF95005D	9.5	127(5")	15.9	33.3~50.8	27
OFF95006D	9.5	152.4(6")	15.9	33.3~50.8	27

Custom modified products are available.

OVAL HANDLES

INTERNAL THREAD

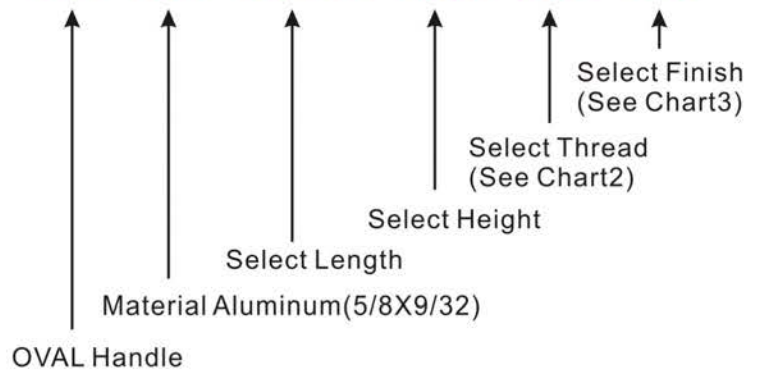
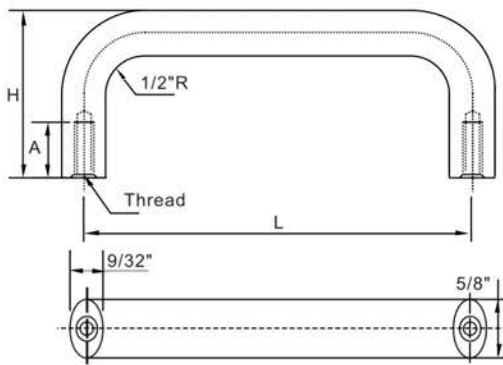
7/16 x 9/32 OVAL HANDLE **OV-AS-064D-H25-832-A3**



How to order OVAL Handles

Part No.	L mm	H mm
OVAS-064D	64	25.4~44.45
OVAS-074D	74	25.4~44.45
OVAS-096D	96	25.4~44.45
OVAS-128D	128	25.4~44.45
OVAS-003D	76.2(3")	25.4~44.45
OVAS-0035D	88.9(3.5")	25.4~44.45
OVAS-004D	101.6(4")	25.4~44.45
OVAS-0045D	114.3(4.5")	25.4~44.45
OVAS-005D	127(5")	25.4~44.45

5/8 x 9/32 OVAL HANDLE **OV-AM-004D-H38-832-A3**



How to order OVAL Handles

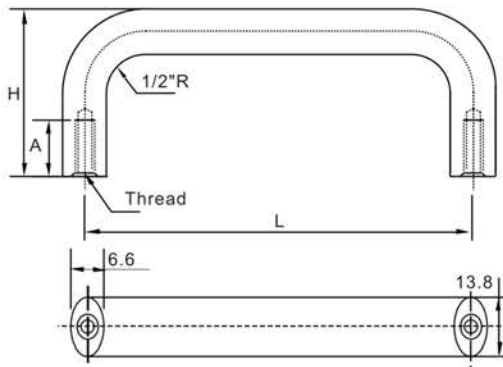
Part No.	L mm	H mm
OVAM-057D	57	25.4~44.45
OVAS-063D	63.5(2.5")	25.4~44.45
OVAS-064D	64	25.4~44.45
OVAS-096D	96	25.4~44.45
OVAS-128	128	25.4~44.45
OVAS-004D	101.6(4")	25.4~44.45
OVAS-005D	127(5")	25.4~44.45

Custom modified products are available.

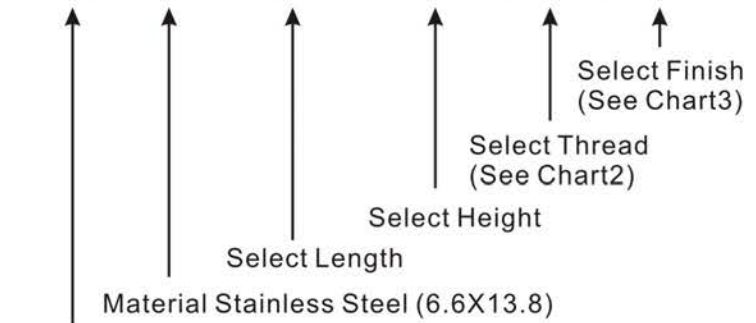
OVAL HANDLES

INTERNAL THREAD

6.6 x 13.8 OVAL HANDLE



OV-SSG-004D-H32-M4-B3

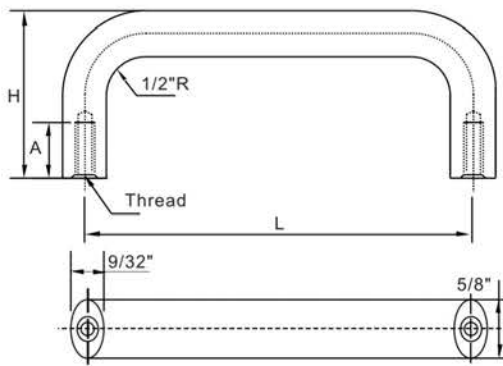


OVAL Handle

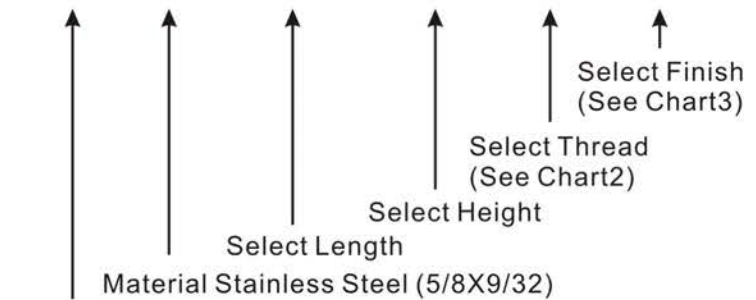
How to order OVAL Handles

Part No.	L mm	H mm
OVSSG-065D	65.5	32~44.45
OVSSG-004D	101.6(4")	32~44.45
OVSSG-110D	110	32~44.45
OVSSG-140D	140	32~44.45
OVSSG-150D	150	32~44.45
OVSSG-192D	192	32~44.45

5/8 x 9/32 OVAL HANDLE (Stainless Steel)



OV-SSM-004D-H32-M4-B3

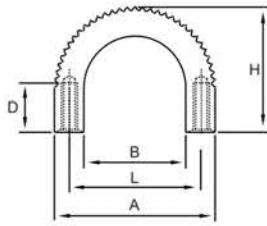


OVAL Handle

How to order OVAL Handles

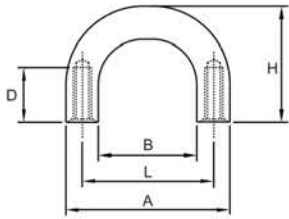
Part No.	L mm	H mm
OVSSM-057D	57	32~44.45
OVSSM-063D	63.5(2.5")	32~44.45
OVSSM-064D	64	32~44.45
OVSSM-096D	96	32~44.45
OVSSM-128D	128	32~44.45
OVSSM-004D	101.6(4")	32~44.45
OVSSM-115D	115.8	32~44.45
OVSSM-005D	127(5")	32~44.45
OVSSM-009D	228.6(9")	32~44.45

Custom modified products are available.



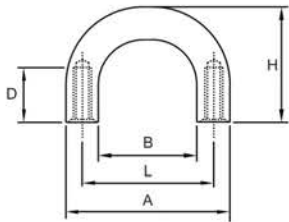
Part No.	L mm	A mm	B mm	H mm	Wide mm
B5-001	28.5	35	22.2	27	9.5

Thread Size	Thread Depth
M4x0.7	6.35-11mm



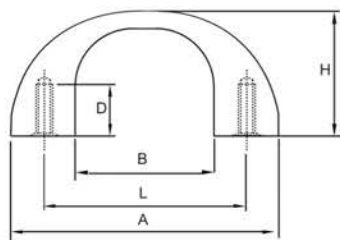
Part No.	L mm	A mm	B mm	H mm	Wide mm
B5-002	28.5	35.05	22.3	23.6	9.5

Thread Size	Thread Depth
8-32	6.35-11mm



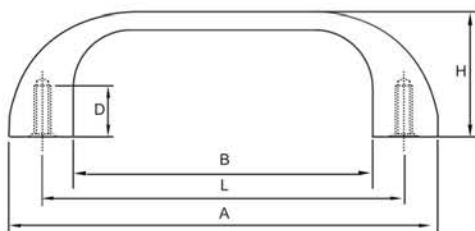
Part No.	L mm	A mm	B mm	H mm	Wide mm
B5-003	25.4	31.7	19	22.2	9.5

Thread Size	Thread Depth
6-32	6.35-11mm



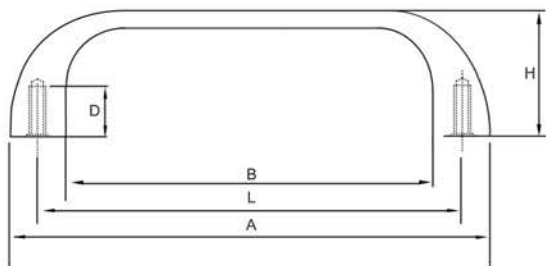
Part No.	L mm	A mm	B mm	H mm	Wide mm
L001	43.2	55.9	29	25.9	9.5~13.5

Thread Size	Thread Depth
8-32	9-11mm
10-24	9-11mm
M4	9-11mm
M5	9-11mm



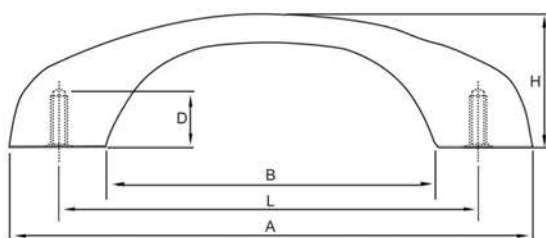
Part No.	L mm	A mm	B mm	H mm	Wide mm
L002	76.2	88.9	62	25.9	9.5~13.5

Thread Size	Thread Depth
8-32	9-13mm
10-24	9-13mm
M4	9-13mm
M5	9-13mm



Part No.	L mm	A mm	B mm	H mm	Wide mm
L003	101.6	114.3	87.4	25.9	9.5~13.5

Thread Size	Thread Depth
8-32	9-13mm
10-24	9-13mm
M4	9-13mm
M5	9-13mm



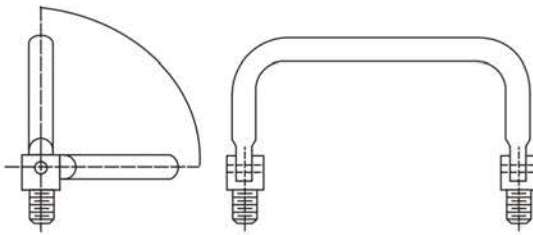
Part No.	L mm	A mm	B mm	H mm	Wide mm
L004	101.6	127	83.52	25.4	9.5~13.5

Thread Size	Thread Depth
8-32	9-13mm
10-24	9-13mm
M4	9-13mm
M5	9-13mm

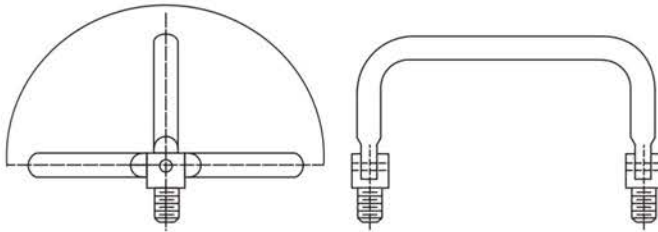
Custom modified products are available.

J9 ROUND FOLDING HANDLES

INTERNAL & EXTERNAL THREAD

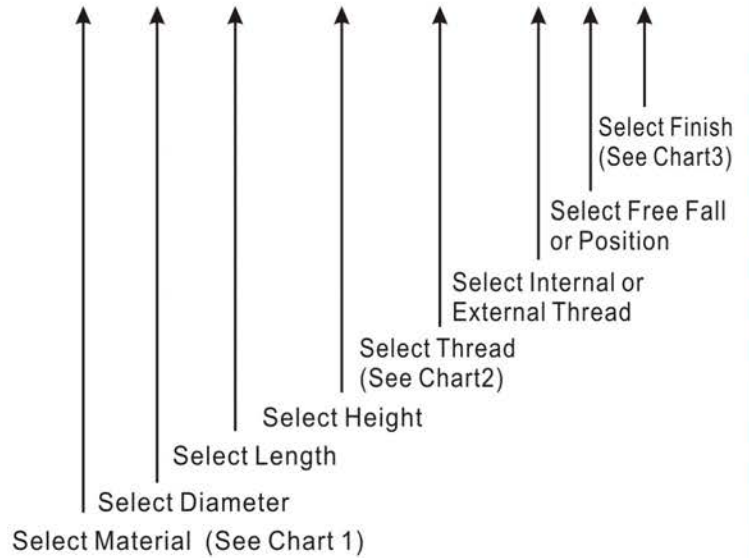


ROUND FOLDING 90° FREE FALL
ROUND FOLDING 90° INFINITE POSITION
ROUND FOLDING 90° 2 POSITION



ROUND FOLDING 180° FREE FALL
ROUND FOLDING 180° INFINITE POSITION
ROUND FOLDING 180° 3 POSITION

J9-A-63-025-H40-M4-N-P-A1



How to order J9 Round Folding Handles

Thraed	Code	Fold Description	Code
Internal	N	Free Fall	F
External	X	Position	P

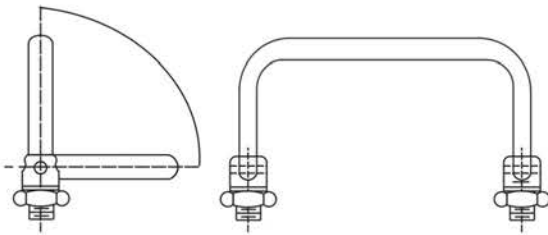
Part No.	Dia. mm	L mm	H mm	Part No.	Dia. mm	L mm	H mm	Part No.	Dia. mm	L mm	H mm
63025	6.35	25	25~45	63005	6.35	5"	25~45	08006	8	6"	30~45
63028	6.35	28.6	25~45	63128	6.35	128	25~45	08160	8	160	30~45
63032	6.35	32	25~45	63006	6.35	6"	25~45	08007	8	7"	30~45
63033	6.35	33.5	25~45	08030	8	30	30~45	95064	9.5	64	30~45
63038	6.35	38.1	25~45	08040	8	40	30~45	95003	9.5	3"	30~45
63040	6.35	40	25~45	08048	8	48	30~45	950035	9.5	3.5"	30~45
63043	6.35	43.2	25~45	08050	8	50	30~45	95096	9.5	96	30~45
63044	6.35	44.45	25~45	08055	8	55	30~45	95100	9.5	100	30~45
63051	6.35	51	25~45	08057	8	57	30~45	95004	9.5	4"	30~45
63054	6.35	54	25~45	08063	8	63.5	30~45	95005	9.5	5"	30~45
63055	6.35	55.5	25~45	08064	8	64	30~45	95128	9.5	128	30~45
63060	6.35	60	25~45	08070	8	70	30~45	95006	9.5	6"	30~45
63063	6.35	63.5	25~45	08003	8	3"	30~45	95160	9.5	160	30~45
63064	6.35	64	25~45	08080	8	80	30~45	10064	10	64	30~45
63070	6.35	70	25~45	080035	8	3.5"	30~45	10003	10	3"	30~45
63071	6.35	71.2	25~45	08090	8	90	30~45	100035	10	3.5"	30~45
63003	6.35	3"	25~45	08092	8	92	30~45	10092	10	92.5	30~45
63082	6.35	82.9	25~45	08004	8	4"	30~45	10096	10	96	30~45
63092	6.35	92	25~45	08108	8	108	30~45	10100	10	100	30~45
63096	6.35	96	25~45	08110	8	110	30~45	10004	10	4"	30~45
63098	6.35	98	25~45	080045	8	4.5"	30~45	10120	10	120	30~45
63100	6.35	100	25~45	08120	8	120	30~45	10005	10	5"	30~45
63004	6.35	4"	25~45	08005	8	5"	30~45	10128	10	128	30~45
63110	6.35	110	25~45	08128	8	128	30~45	10150	10	150	30~45
63115	6.35	115	25~45	08133	8	133	30~45	10006	10	6"	30~45
63117	6.35	117	25~45	08140	8	140	30~45	10160	10	160	30~45

Custom modified products are available.

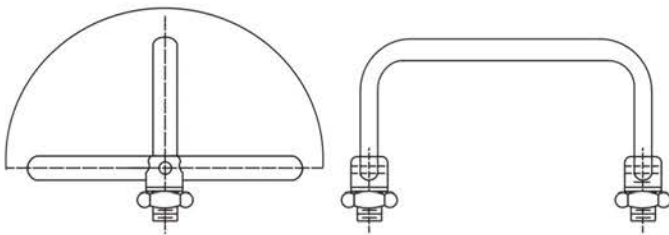
R9 ROUND FOLDING HANDLES

INTERNAL & EXTERNAL THREAD

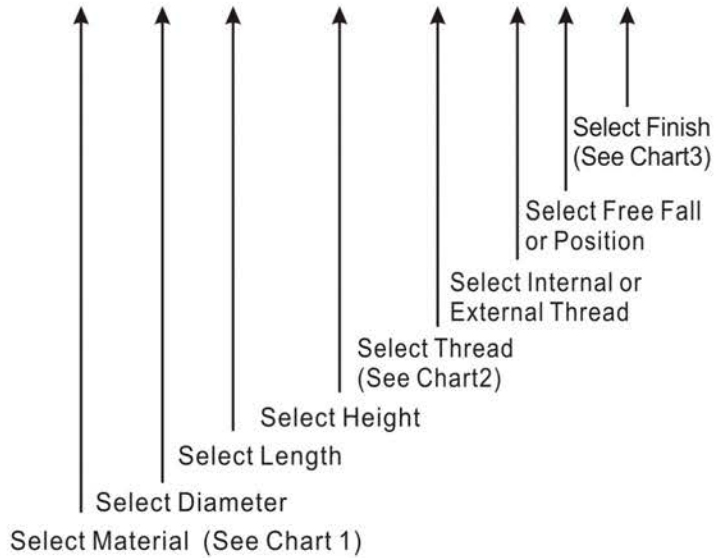
R9-A-63-025-H40-M4-N-P-A1



ROUND FOLDING 90° FREE FALL
ROUND FOLDING 90° INFINITE POSITION
ROUND FOLDING 90° 2 POSITION



ROUND FOLDING 180° FREE FALL
ROUND FOLDING 180° INFINITE POSITION
ROUND FOLDING 180° 3 POSITION



How to order R9 Round Folding Handles

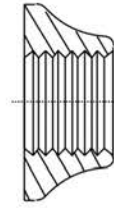
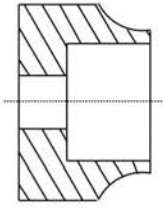
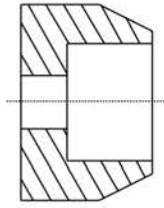
Thraed	Code	Fold Description	Code
Internal	N	Free Fall	F
External	X	Position	P

Part No.	Dia. mm	L mm	H mm	Part No.	Dia. mm	L mm	H mm	Part No.	Dia. mm	L mm	H mm
63025	6.35	25	25~45	63005	6.35	5"	25~45	08006	8	6"	30~45
63028	6.35	28.6	25~45	63128	6.35	128	25~45	08160	8	160	30~45
63032	6.35	32	25~45	63006	6.35	6"	25~45	08007	8	7"	30~45
63033	6.35	33.5	25~45	08030	8	30	30~45	95064	9.5	64	30~45
63038	6.35	38.1	25~45	08040	8	40	30~45	95003	9.5	3"	30~45
63040	6.35	40	25~45	08048	8	48	30~45	950035	9.5	3.5"	30~45
63043	6.35	43.2	25~45	08050	8	50	30~45	95096	9.5	96	30~45
63044	6.35	44.45	25~45	08055	8	55	30~45	95100	9.5	100	30~45
63051	6.35	51	25~45	08057	8	57	30~45	95004	9.5	4"	30~45
63054	6.35	54	25~45	08063	8	63.5	30~45	95005	9.5	5"	30~45
63055	6.35	55.5	25~45	08064	8	64	30~45	95128	9.5	128	30~45
63060	6.35	60	25~45	08070	8	70	30~45	95006	9.5	6"	30~45
63063	6.35	63.5	25~45	08003	8	3"	30~45	95160	9.5	160	30~45
63064	6.35	64	25~45	08080	8	80	30~45	10064	10	64	30~45
63070	6.35	70	25~45	080035	8	3.5"	30~45	10003	10	3"	30~45
63071	6.35	71.2	25~45	08090	8	90	30~45	100035	10	3.5"	30~45
63003	6.35	3"	25~45	08092	8	92	30~45	10092	10	92.5	30~45
63082	6.35	82.9	25~45	08004	8	4"	30~45	10096	10	96	30~45
63092	6.35	92	25~45	08108	8	108	30~45	10100	10	100	30~45
63096	6.35	96	25~45	08110	8	110	30~45	10004	10	4"	30~45
63098	6.35	98	25~45	080045	8	4.5"	30~45	10120	10	120	30~45
63100	6.35	100	25~45	08120	8	120	30~45	10005	10	5"	30~45
63004	6.35	4"	25~45	08005	8	5"	30~45	10128	10	128	30~45
63110	6.35	110	25~45	08128	8	128	30~45	10150	10	150	30~45
63115	6.35	115	25~45	08133	8	133	30~45	10006	10	6"	30~45
63117	6.35	117	25~45	08140	8	140	30~45	10160	10	160	30~45

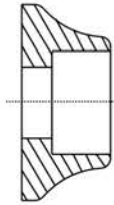
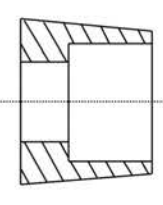
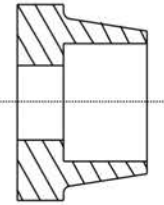
Custom modified products are available.

Foreword (Handles Ferrules)

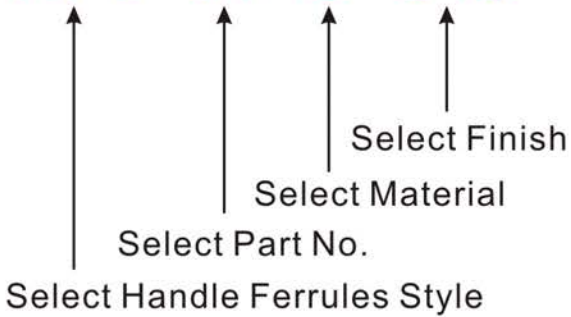
HANDLE FERRULES STYLE 1 HANDLE FERRULES STYLE 2 HANDLE FERRULES STYLE 3



HANDLE FERRULES STYLE 4 HANDLE FERRULES STYLE 5 HANDLE FERRULES STYLE 6



HF1-01-S-S10



Material Description	Code
Aluminum	A
Brass	B
Carbon Steel	S
300 Series Stainless Steel	SS

Finish Description	Code
Nickel Plated	S1
Chrome Plated	S2
Satin Chrome	S6
Zinc Plated	S10
Zinc Yellow Chromate	S11
Black Oxide	S22
Black Zinc	S23
Tin Plated	S24
No Finish	S14
Passivate	SB5
Anodize Clear	SA1
Glossy Anodize Clear	SA2
Anodize Black	SA3
Glossy Anodize Black	SA4
Clear Iridite	SA5

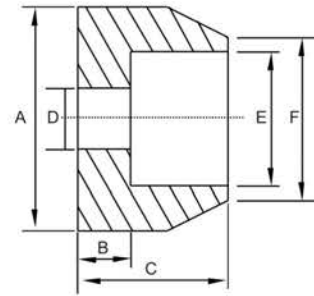
How to order Handle Ferrules

Handle Ferrule	Code
Style 1	HF1
Style 2	HF2
Style 3	HF3
Style 4	HF4
Style 5	HF5
Style 6	HF6

Custom modified products are available.

HANDLE FERRULES

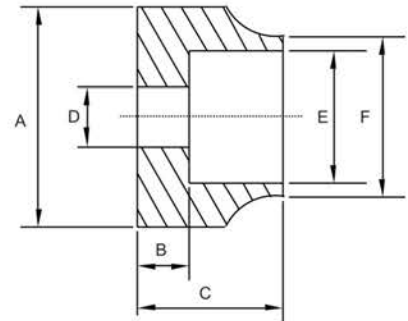
STYLE 1 American Standard



Part No.	A	B	C	D	E	F
	+ .005 - .005	+ .005 - .005	+ .005 - .005	+ .005 - .005	+ .005 - .005	+ .015 - .015
FH1-01	1/4	.046	.125	.116	.136	13/64
FH1-02	1/4	.046	.125	.116	.161	13/64
FH1-03	5/16	.062	.125	.141	.203	17/64
FH1-04	3/8	.062	.125	.141	.260	5/16
FH1-05	3/8	.062	.187	.204	.260	5/16
FH1-06	7/16	.062	.187	.204	.260	5/16
FH1-07	1/2	.062	.250	.187	.260	11/32
FH1-08	15/32	.062	.250	.221	.320	13/32
FH1-09	9/16	.062	.250	.221	.320	13/32
FH1-10	5/8	.093	.375	.250	.385	15/32
FH1-11	3/4	.093	.375	.315	.515	39/64

HANDLE FERRULES

STYLE 2 American Standard

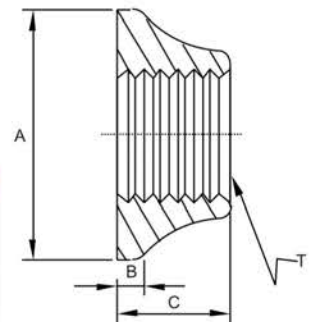


Part No.	A	B	C	D	E	F
	+ .005 - .005	+ .005 - .005	+ .005 - .005	+ .005 - .005	+ .005 - .005	+ .015 - .015
FH1-01	1/4	.047	.125	.109	.161	13/64
FH1-02	5/16	.062	.125	.141	.203	17/64
FH1-03	3/8	.062	.187	.203	.260	5/16
FH1-04	9/16	.062	.250	.219	.320	13/32
FH1-05	3/4	.094	.312	.196	.320	13/32
FH1-06	7/8	.094	.312	.196	.385	9/16
FH1-07	7/8	.094	.312	.219	.385	9/16
FH1-08	7/8	.187	.562	.275	.510	5/8

HANDLE FERRULES

STYLE 3 American Standard

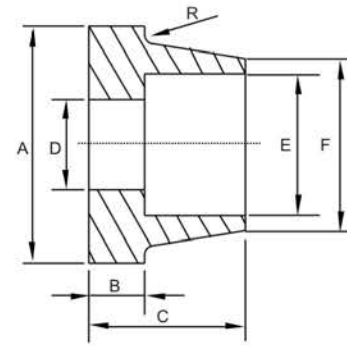
Part No.	Thread	A	B	C
		+ .005 - .005	+ .005 - .005	+ .005 - .005
FH6-01	5/16-18	5/8	1/32	.250
FH6-02	3/8-24	3/4	1/16	.321



Custom modified products are available.

HANDLE FERRULES

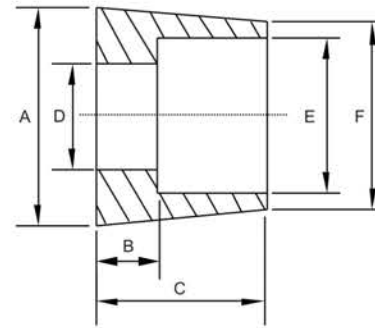
STYLE 4 American Standard



Part No.	A	B	C	D	E	F
		+ .005 - .005	+ .005 - .005	+ .005 - .005	+ .005 - .005	+ .005 - .005
FH4-01	5/8	.062	.375	.201	.257	21/64
FH4-02	3/4	.062	.375	.201	.322	25/64
FH4-03	3/4	.062	.375	.201	.383	29/64

HANDLE FERRULES

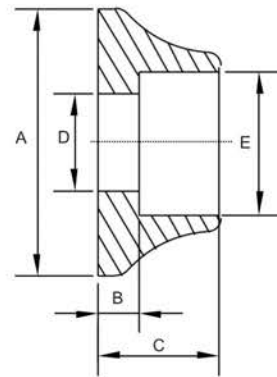
STYLE 5 American Standard



Part No.	A	B	C	D	E	F
		+ .005 - .005	+ .005 - .005	+ .005 - .005	+ .005 - .005	+ .005 - .005
FH5-01	9/16	.093	.312	.203	.323	7/16
FH5-02	5/8	.125	.437	.281	.390	7/16
FH5-03	3/4	.187	.562	.328	.510	19/32

HANDLE FERRULES

STYLE 6 American Standard



Part No.	A	B	C	D	E
		+ .005 - .005	+ .005 - .005	+ .005 - .005	+ .005 - .005
FH6-01	3/4	.093	.312	.196	.320

Custom modified products are available.